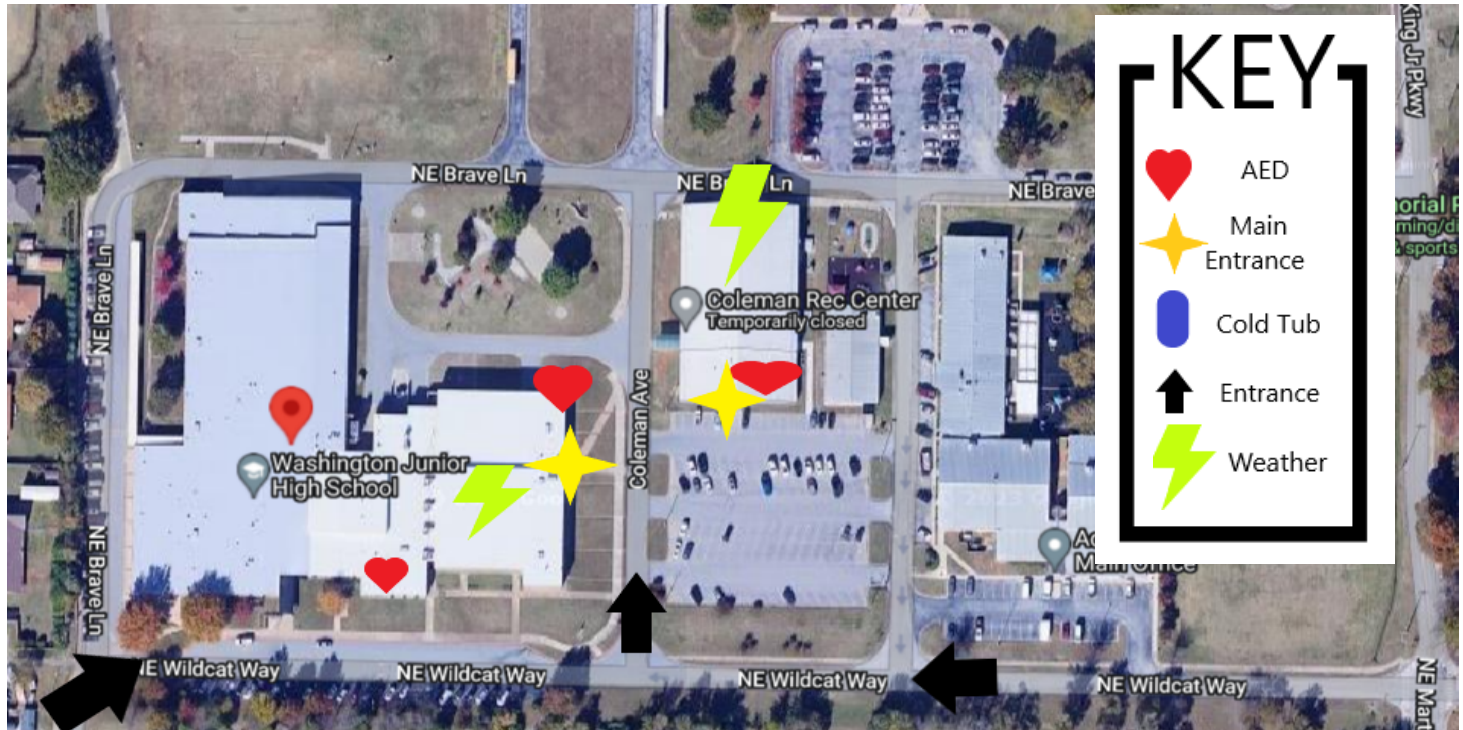




EMERGENCY ACTION PLAN (EAP): WJHS - GYM - Coleman Rec. Center

1501 NE WILDCAT WAY, BENTONVILLE, AR. 72712



Role of First Responders

1. Immediate care of the injured or ill athlete
2. Activate EMS
 - a. Designate an individual to call 911
 - b. Provide pertinent information: name, location, phone number, number of injured individuals, condition of the injured, first aid rendered, specific directions, other information as requested
3. Retrieve emergency equipment
4. Direct EMS to scene
 - a. Designate an individual to the appropriate position (STAR)
5. Scene control

Venue Directions

Instruct EMS to enter off of NE Wildcat Way to Coleman Ave. For Gym enter through glass side door. For Coleman Rec enter front door.

Emergency Communication

DREW BOMBARDIERE (HEAD ATHLETIC TRAINER) 850-428-1677
BILLY TIPPS (ATHLETIC DIRECTOR) 972-953-6245

DANIELLE CLARK (ATHLETIC TRAINER) 479-301-5852
CHRIS HUTCHENS (ASSISTANT AD) 479-531-4135

Emergency Equipment

AED and trauma kit are in the nurse's office, in the gym and in the Coleman Rec center. (*HEART).

Medical Facilities: Ambulance transports will go to Mercy Hospital Northwest AR, a Level III Trauma Center. Located at 2710 S Rife Medical Ln, Rogers, AR 72758 . Emergency Department: